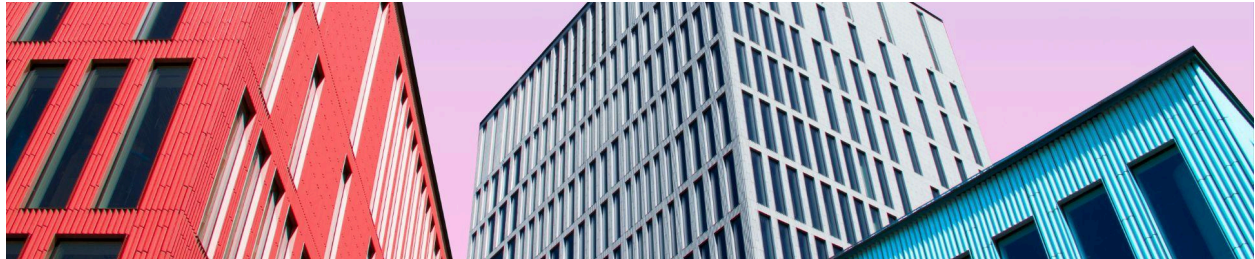




Customer Success



### AVAIL for Revit 5.2 Release Notes

The following were delivered as part of a development effort that concluded on Thursday, May 2, 2024. This effort is for the release of **version 5.2.0** of the AVAIL for Revit Add-in.

Its release is primarily focused on support for Revit 2025, support for Assemblies, and the Revit Application Versioning Preview Release feature.

AVAIL Browser (Version)	Application Versions Supported
AVAIL for Revit (5.2)	Autodesk Revit 2019, 2020, 2021, 2022, 2023, 2024, 2025

### AVAIL for Revit 5.2.0 (released 5/6/2024)

#### New

- Support for Assemblies
- Support for Revit Application Versioning feature (Preview Release)
  - Add-in chooses the best available Version of a downloaded, Host-in-Cloud Revit file based on the application version of the current instance of Revit (Revit 2022, Revit 2023, etc).
- New right-click Context Menu in Revit 2025
  - Menu options include:
    - Launch AVAIL (Launches the AVAIL Desktop)
    - Show in Project Navigator (displays the selected item in the Project Navigator panel)
    - Show Instance Navigator (If relevant, will show the Instance Navigator window. Currently supports Family Types, Groups, and Assemblies)
    - Search in AVAIL (Takes the parent element name and sends it as a search query to the AVAIL Desktop)

#### Improved/Fixed

- Support for Revit 2025
  - Improved Instance Navigator
    - Added support for Assemblies and Schedules
    - Added Previous and Next buttons to easily switch between instances
- 

## **AVAIL for Revit 5.1.2** (released 12/4/2023)

### Fixed

- Project Navigator
  - Fixes issue with invalid navigation to a view upon synchronizing with a Central Model in Revit.
  - Fixes issue with activation of the Project Navigator Dockable Palette on close of active documents and opening within the same session of Revit.
  - Ensures that the dropdown for swapping between documents (top-left of panel) only triggers rebuilding of the current project's list in the Project Navigator on explicit user interaction.
  - Reduces chance when using the Project Dropdown menu to swap between projects causing the zoom factor of the most recent view to be reset. (Revit API Limitation)
  - Fixes display of Group Instance Navigator button.
  - Fixes horizontal scroll of Element Filters using mouse wheel when Project Navigator Dockable Palette is vertically reduced in size.
  - Fixes potential failure to display Family Instance Navigator.
  - Ensures display of Project Navigator Dockable Palette if clicking the button in the Revit Task Panel to launch the AVAIL Desktop application.

### Improvements

- General
  - Fixes display of Harvest thumbnail during multiselect from the AVAIL Desktop.
  - Fixes issue where the Upgrade button within the Content Popup window fails to trigger the Upgrade process.
  - Adds warning dialog for failure to copy a Harvested Material to a Family.

### Known Issues

- Revit Add-in Compatibility
  - Victaulic Tools - Investigating add-in conflict
  - Enscape (Any version)
    - If a Detail Group exists on a View and is copied during a Load or Bulk Load operation, the group may be placed on a different destination view.
      - Reason: During a Load or Bulk Load operation of a Sheet or Drafting View, in order to copy a Detail Group onto the destination View, it must be programmatically set as the Active View. This is

because the position of the Detail Group is relative to the Active View's drawing space (fixed in v5.0.7.0). Unfortunately, another issue was discovered with this fix. Enscape appears to be listening for the ViewActivated event and potentially resetting/reassigning the Active View to something else (even if the view is a 2D view such as Drafting Views). This means the placement of Detail Groups onto Drafting Views may be performed on a different view.

---

## **AVAIL for Revit 5.1.1** (released 9/8/2023)

### New

- Project Navigator
  - Adds support for instance navigation of Tag-based Annotation Symbols

### Fixed

- Project Navigator
  - Fixes issue with Project Navigator not consistently refreshing the UI for some added or removed elements
  - Fixes issue with duplicate Family Types getting displayed on adding to a project
  - Removed empty text search analytics event
  - Fixed issue with BuiltInCategory casting in Revit 2022

### Improvements

- General
  - Improved timing of returned search results
  - Improved UI display of pop-up Load panel in Project Navigator
  - Improves UI refresh during search

### Known Issues

- Revit Add-in Compatibility
  - ANY version of Enscape
    - If a Detail Group exists on a View and is copied during a Load or Bulk Load operation, the group may be placed on a different destination view.
      - Reason: During a Load or Bulk Load operation of a Sheet or Drafting View, in order to copy a Detail Group onto the destination View, it must be programmatically set as the Active View. This is because the position of the Detail Group is relative to the Active View's drawing space (fixed in v5.0.7.0). Unfortunately, another issue was discovered with this fix. Enscape appears to be listening for the ViewActivated event and potentially resetting/reassigning

the Active View to something else (even if the view is a 2D view such as Drafting Views). This means the placement of Detail Groups onto Drafting Views may be performed on a different view.

---

## **AVAIL for Revit 5.1.0** (released 8/22/2023)

- New
  - Redesign of Project Mode and renamed as Project Navigator
    - Introduction of Element Filters.
      - Ability to view select Project Elements by selecting one or more Element Filters
    - New “Recently Viewed” option displays the last 10 opened tabs per user per project
      - Includes Sheets, Views, Legends, and Schedules. Does not display opened Families or Groups
    - A button to launch the AVAIL Desktop from Project Navigator now says Open AVAIL
    - Project Elements have (from left to right) an Icon (based on Type), Title, and Category. Some elements include additional functionality (addressed below by Element Type)
    - Sheets
      - Double-clicking on a Sheet Title will open the Sheet
      - Expanding a Sheet will list all the Elements currently on the Sheet. Double-clicking the Elements will open the Element.
    - Views/Legends/Schedules
      - Double-clicking the Title will open the respective Element
      - An On Sheet Indicator will display as blue if it exists on a Sheet. If it does not, it will display as gray. Hovering over a blue indicator will display a hover-tip indicating which Sheet the item has been placed on. Clicking on the blue indicator will open the Sheet.
      - Dragging the Title onto a Project Document will put the user in placement mode for that Element
    - Families
      - Double-clicking on a Family Title will expand the Family to display the Types available in the project
      - Double-clicking on a Family Type will open the Revit Type Properties dialog
      - Family Types will indicate how many instances occur in the project within an Instance Button to the right of the Family Title
        - Single-clicking on the Instances Button will launch the Instance Navigator

- If a family has no instances, the Instance Button will be hidden
- Dragging a Family Type onto a Project Document will put the user in placement mode
- Groups
  - Double-clicking on a Group will open the Revit Type Properties dialog
  - Groups display a button to the right of the Group Title that when single-clicked will open the Instance Navigator
- System Families
  - Double-clicking a System Family Title will open the Revit Type Properties dialog
  - Dragging a System Family onto a Project Document will put the user in placement mode
- Instance Navigator
  - Displays the instances of an Element currently in the Project.
  - The Instance Navigator provides the ability to group by None, Room, Level, or Host. Clicking on the Navigate to Instance icon (a magnify icon) will open a Project Document containing that instance and select the Element.
- Searching
  - The Project Navigator will search as you type. Meaning the Project Elements will start to filter out as the user types in the Search Bar.
  - Project Elements will return as a match based on the Element Title or Category
  - A Sheet will return as a result if any of its child Elements match. Example: The Sheet A101 - Site Plan will be returned as a match on a text search of "Planting" because the Element Planting Schedule exists on that Sheet. The same concept works for Families when the text search matches any of its Types.
  - When searching, the option to Search AVAIL for "search term" will appear. Clicking on this will execute a search in the AVAIL Desktop. Items returned on this search will be prioritized by the Application Mapping.
- AVAIL for Revit 5.x "Pop-up Window" is now officially the "Content Navigator" window.
  -
- New Content Navigator Launch Window
  - Selection in the Desktop will open a Launch Window within the Project Navigator with different action items based on the Content Type.
  - Only Content that can be loaded or opened in Revit will display in the Launch Window.
    - Content that can not be loaded will present a "not loadable" indicator.

- Families
    - Actions include “Load Item(s)” and view “Types & Parameters” which will open the Content Navigator dialog.
  - Project Files (non Harvest)
    - Actions include View Project. This opens the content in the Content Navigator
  - Content published using AVAIL Harvest for Revit will display a single “Load Item” option.
- 

## **AVAIL for Revit 5.0.7** (released 6/15/2023)

### ***Fixed***

- General
  - Fixed issue with bulk loading of Sheets with Legends
  - Fixed issue with possible duplicate Detail Groups created if instances are placed on Sheets or Drafting Views
  - Fixed issue with placement of Detail Groups on Sheets and Drafting Views.
  - Reduced Revit Idle Events.
  - Addressed potential issue with copying Drafting Views encountering random “Cannot Copy Elements” error via a retry transaction.
  - Fixed potential invalid transformation from copying Views on a sheet.
- Known Issues
  - Addin Compatibility
  - ANY version of Enscape
    - If a Detail Group exists on a View and is copied during a Load or Bulk Load operation, the group may be placed on a different destination view.
      - Reason: During a Load or Bulk Load operation of a Sheet or Drafting View, in order to copy a Detail Group onto the destination View, it must be programmatically set as the Active View. This is because the position of the Detail Group is relative to the Active View's drawing space (fixed in v5.0.7.0). Unfortunately, another issue was discovered with this fix. Enscape appears to be listening for the ViewActivated event and potentially resetting/reassigning the Active View to something else (even if the view is a 2D view such as Drafting Views). This means the placement of Detail Groups onto Drafting Views may be performed on a different view.

---

## **AVAIL for Revit 5.0.6** (released 5/11/2023)

### ***New***

- Added support for loading Sheets with Legends
- Added support for loading View Templates
- Added notification marker on the AVAIL icon in the Autodesk Add-ins Ribbon Panel for connection lost or disconnected
- Added warning dialog for Views (Drafting & Legends) that match by name, allowing the user to choose to Continue loading or to skip (Note: a drag action prompts the User if they would prefer to use the View already in the active project that matched by name)

### ***Fixed***

- Fixes bug with dragging and dropping Harvested Legends
- Improved handling of dropped Named Pipe connection to the AVAIL Desktop
- Improved Bulk Loading Progress dialog
- Fixes issue with Type Catalog types sorting

---

## **AVAIL Browser 5.0.5** (released 4/20/2023)

### ***New***

- Support for Autodesk Revit 2024
- Support for loading View Templates
- Support for AVAIL Desktop Preview Release 4.5

### ***Fixed***

- General
  - Improves handling messages of drag and drop from the AVAIL Desktop
  - Drag and drop improvements for prompting placement, including specifically around Harvest content and content hosted in Egnyte
  - Adjusted background color of Load buttons to light gray
  - Improved handling of lost connection
- Installer

- Removes the word “Browser” from installer and interface
- 

## **AVAIL Browser 5.0.4** (released 3/28/2023)

### ***Fixed***

- Pop-up Window
    - Fixed issue with placement of Pop-up Window on multiple monitors with High-DPI displays and/or mixed scaling display settings.
    - Improved detection of destination of the dropped item based on Revit instance window
    - Improved grouping of Sheets, Schedules and Views based on Browser Organization of source Revit document
  - Family Types
    - Improved handling of duplicate type names
    - Added Duplicate Type name alert for invalid Type Catalogs
  - Legends
    - Fixed drag and drop prompt for placement
  - Analytics
    - Fixed issue with logout from AVAIL Desktop not resetting Analytics
  - General
    - Improved pre-check before opening to reduce chance of File In Use error
    - Improved error handling
    - Added support for AVAIL Desktop Preview Release 4.5
  - Installer
    - Fixed backwards compatibility issue due to upgrade of settings.config file
- 

## **AVAIL Browser 5.0.2** (released 2/10/2023)

### ***Fixed***

- Drag and drop
  - Fixed issue with Pop-up window placement on multiple monitors
  - Fixed issue with dropping onto detached tabs of a Revit view
  - Fixed issue with dropping from AVAIL Desktop onto specific regions of the Revit Window
  - Fixed issue dropping onto a Revit View (e.g. 3D view) displays the pop-up



- window
  - Fixed issue with dropping onto the Revit toolbar to open the Revit document.
  - Improved detection of destination of the dropped item based on Revit instance
  - Analytics
    - Fixed issue with Analytics not reporting the correct version number per event
  - Installation
    - Fixed backwards compatibility issue due to upgrade of settings.config file
- 

## **AVAIL Browser 5.0.1** (released 1/9/2023)

### **AVAIL Browser Core**

#### ***New***

- Introduces new drag-and-drop workflow for loading Revit content from AVAIL Desktop.
  - Pop-up window
    - Drag-and-dropping Revit content objects into the active session of Revit displays a modal window of the document's loadable elements.
    - Keeping the Pop-up window open and selecting another Revit content object from AVAIL Desktop automatically opens and displays the file's contents.
  - Adds support for downloading Revit elements hosted in BIM360/ACC Docs through Autodesk Desktop Connector on release of drag-and-drop operation
- Redesigned UI
  - Simplified display of elements in a Revit content object and reduction of options condensed into an options menu.
  - Checkboxes next to the Revit element in a list to make selection of items intended to load clearer to the user.
  - Ability to Select All/Select None option with checkbox control.
  - Parameters tab groups items based on Family Type for Family content objects.
- Removal of dependencies (.dll files) to reduce conflicts with other Add-Ins in Revit
- Family content object with one element automatically loads into the active project on drag.

## ***Fixed***

- Fixed issue with Add as Tag Context Menu item not displaying
- Fixed margin issue in alert dialogs
- Fixed issue with Pop-up window placement on multiple monitors